

# Vapour Control Layers

PROCHECK® SERIES, PROFOIL 86I & REFLECTATHERM SERIES

## OVERVIEW:

**Attention to detail:** All Vapour Control Layers (VCLs) need to be a well-sealed continuous layer. Care should be taken to seal all laps, penetrations, perimeters, junctions, and accidental punctures. Ensure substrate surfaces are as clean, dry and dust-free as possible before beginning installation.

**Accessories:** Probond Tape, Reflectafoil Tape

**Mechanical Fixings:** Place fixings at 1000mm centres. If using blown insulation, reduce fixing centres to 500mm.

**Penetrations/Opening:** VCLs should be cut and neatly formed around openings and penetrations. The membrane should be made air- and vapour-tight by sealing the opening with Reflectafoil Tape.

**Puncture Damage:** For through-membrane punctures, apply a continuous bead of Probond Tape around the damaged area and place a generous patch of membrane over the puncture extending at least 150mm beyond the puncture edge. For minor scuff-type damage of less than 25mm, Reflectafoil Tape may be used alone without a patch.

**Delivery & Site Handling:** Rolls are supplied to site with a label clearly identifying product name and grade. Rolls should be stored flat or upright on a clean, level surface and kept under cover.

## INSTALLATION: PROCHECK® SERIES & PROFOIL 86I

1. Apply single runs of Probond Tape at equal centres (max. 600mm) to substrate/studs/fixing rails to provide a temporary fixing point (Fig.1).
2. Install the VCL horizontally or vertically in an even manner ensuring the membrane is flat against the substrate and without wrinkles. If installing horizontally, work from bottom to top to ensure overlaps are shingled (Fig.2).
3. Vertical and horizontal overlaps should be min. 150mm. Seal between overlaps with Probond Tape (Fig.2). Note: For membranes with integrated tape, see Figs.5&7.
4. Mechanical fixings (staples) may be used to permanently attach the VCL to the underlying substrate/stud/fixing rail by firing through the run of Probond Tape. The Tape ensures vapour-tightness by sealing the fixing puncture. (Fig.3)
5. Perimeter edges may be sealed with Reflectafoil Tape (Fig.3).
6. The VCL can be lapped directly to the subfloor; tied into a VCL along the ceiling or to the airtight layer between floors in multi-storey dwellings. If in doubt, please send a detail to the Technical Department for assistance.

## INSTALLATION: PROFOIL 86I continued

Follow previous instructions 1-7, then:

7. Seal all overlaps and perimeter edges with a single run of Reflectafoil Tape. (Fig.4).

## INSTALLATION: PROCHECK® ADAPT

Follow previous instructions 1-7, using the additional notes re: Integrated Tape:

- Working from the bottom of the wall to the top, install the membrane horizontally with the Integrated Tape running along the bottom edge (Fig.5).
- Ensure the Integrated Tape laps line up, without undue stress or wrinkles in the lap line, before removing release liner. Apply sufficient hand pressure to ensure Integrated Tape is fully bonded to the membrane below.
- Seal all other laps using Wraptite Tape.
- Cut Procheck Adapt neatly around openings and penetrations, using Wraptite Tape for air and vapour tightness.

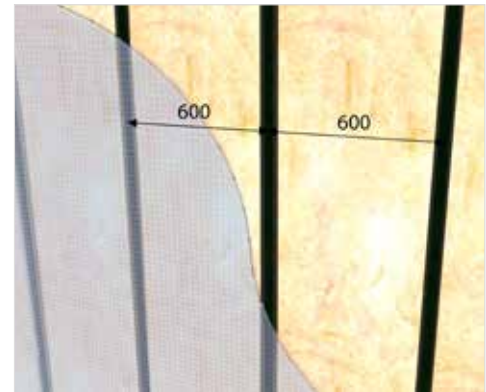


Fig. 1: Temporary fixing with Probond Tape

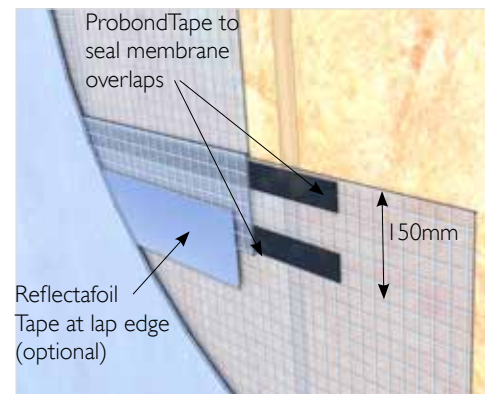


Fig. 2: Lap joint detail with Probond Tape

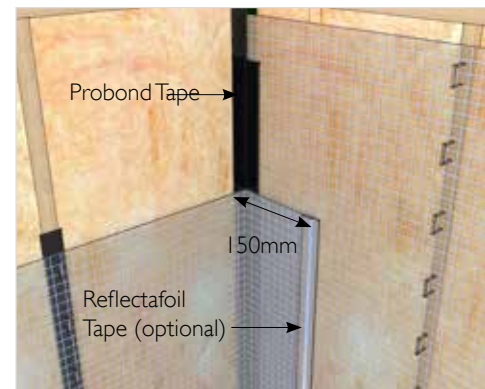


Fig. 3: Corner joint detail showing fixing placement through Probond Tape

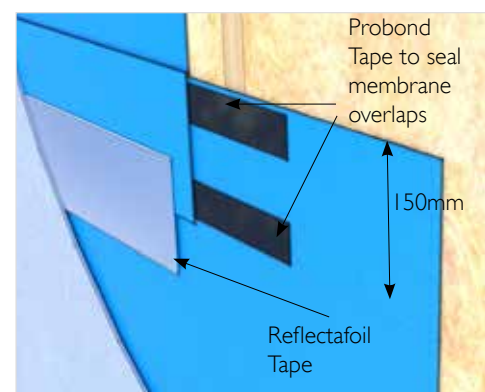


Fig. 4: Profoil detail: Overlaps sealed with Probond Tape and Reflectafoil Tape over the edges

(over...)

# Vapour Control Layers

PROCHECK® SERIES, PROFOIL 861 & REFLECTATHERM SERIES

## NOTES ON INSTALLING REFLECTIVE VCLs:

- \*\* Reflectatherm Plus and Reflectatherm Premier are installed with the reflective side facing the service cavity. \*\*
- A min. 19mm airspace is required between the VCL and the plasterboard to create a low-emissivity cavity. This space can be used as a service void.
- The effects of reflected sunlight/UV rays should be considered during installation and appropriate PPE (eye/skin protection) worn as necessary.

## INSTALLATION: REFLECTATHERM PLUS

1. Apply single runs of Probond Tape at equal centres (max. 600mm) to substrate/studs/fixing rails to provide a temporary fixing point (Fig.1).
2. Install the VCL horizontally or vertically in an even manner ensuring the membrane is flat against the substrate and without wrinkles.
3. Vertical and horizontal overlaps should be min. 150mm. The VCL should be installed to ensure horizontal overlaps are shingled.
4. Mechanical fixings (staples) may be used to permanently attach the VCL to the underlying substrate/stud/fixing rail by firing the fixing through the run of Probond Tape thereby sealing the fixing-puncture.
5. Seal overlaps and perimeter edges with a single run of Reflectafoil Tape.
6. The VCL can be lapped directly to the subfloor; tied into a VCL along the ceiling or to the airtight layer between floors in multi-storey dwellings. If in doubt, please send a detail to the Technical Department for assistance.

## INSTALLATION: REFLECTATHERM PREMIER

1. Apply single runs of Probond Tape at equal centres (max. 600mm) to substrate/studs/fixing rails to provide a temporary fixing point (Fig.1,7).
2. Working from the bottom of the wall to the top, install the membrane in a horizontal orientation with the integrated tape running along the bottom edge (Fig.7). Ensure the Integrated Tape laps line up, without undue stress or wrinkles in the lap line, before removing release liner. Apply sufficient hand pressure to ensure Integrated Tape is fully bonded to the membrane/substrate.
3. Vertical and horizontal overlaps should be min. 150mm. Install the membrane in an even manner ensuring it is flat against the substrate and without wrinkles.
4. Mechanical fixings (staples) may be used to permanently attach the VCL to the underlying substrate/stud/fixing rail by firing the fixing through the run of Probond Tape thereby sealing the fixing-puncture.
5. Seal vertical overlaps, top and side perimeter edges with a single run of Reflectafoil Tape.
6. Reflectatherm Premier can be lapped directly to the subfloor; tied into a VCL along the ceiling or to the airtight layer between floors in multi-storey dwellings. If in doubt, please send a detail to the Technical Department for assistance.

### Disclaimer

The contents of this installation guide are provided by A. Proctor Group Limited (APG) in good faith for general information purposes only. The statements and data contained in this guide are not specific technical recommendations as to any particular design or application. APG give no warranty and accept no liability for its contents and the ultimate determination as to product suitability is the sole responsibility of the installer or end user. APG strongly recommends following the installation guidelines and the relevant Codes of Practice which are correct at the time of publication and results may vary depending on the particular design/and or application.

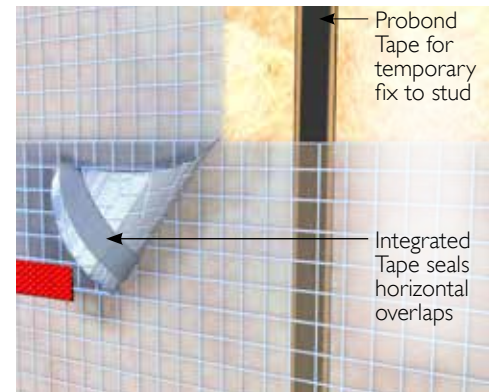


Fig.5: Procheck Adapt with integrated tape detail



Fig.6: Reflectatherm Plus

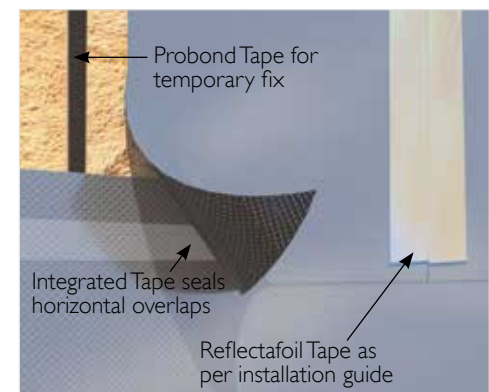


Fig.7: Reflectatherm Premier with Integrated Tape detail



Download a brochure from  
our website...

[www.proctorgroup.com](http://www.proctorgroup.com)

contact@proctorgroup.com | +44 (0) 1250 872261

August 2020